



# Northern Neonatal Network

## Quarterly Report

### Q3 Oct-Dec 15



This report is a summary of the dashboard data submitted every month by each of the 9 Trusts that make up the Northern Neonatal Network. These figures are taken from both the BadgerNet Database where the required data is available and the Dashboard returns that have been supplied to Mark each month.

It is important to note the following when looking at these reports;

- As from 1<sup>st</sup> April 2015, all reports use the BAPM 2011 definitions, NOT the previous BAPM 2001 used in all reports to date. There are significant differences in how these newer levels of care are calculated and these newer reports need to be considered accordingly. There are significant differences, for example, in how IC no longer routinely includes babies on CPAP by default, rather taking account of other clinical indicators – weight, gestation etc.
- The BAPM 2011 definitions include a new “Normal Care” category. If ONLY “Carer resident – caring for baby” or the “None or >4hourly intervals” for observations/monitoring on the “general summary” page is ticked, this will classify as a “normal care” day. Under current commissioning guidance, unlike “special care” days, these are not funded. We have included these days as they are what the system reflects for each Unit. ***You may wish to check these for future reporting purposes.***
- The staffing level reports are now calculated by mapping nurse staffing levels submitted against the activity generated by the new BAPM 2011 definitions and have altered from typical levels under BAPM 2001 accordingly.
- The definitions for each of the included items are those given on the dashboard.
- The reports relating to transfers in Section 3 are taken entirely from the transport record sheets completed by the two teams from the RVI and JCUH. Interpretation of these in respect of some of the coding (particularly relating to “urgency”) is often highly subjective, but to minimise this, we have tried to rely on just a few key definitions that may still provide a useful indication of our Network’s transport team’s activity. The charts are therefore accompanied by some boxes that explain the basis for the definitions used.
- The data for South Tyneside is showing as “incomplete” for most of this quarter so we have not been able to verify accuracy, but have included what is available from BadgerNet.

We continue to invite constructive criticism and feedback from all our Stakeholders across the Network and have taken into account some of these in this latest version of quarterly reports. It is our hope that these quarterly Reports will continue to provide a rich but useful source of data for both Network and individual Units/Trusts and help determine issues across the Network in all our Units in relation to their activity and capacity, thus informing future strategic discussions and planning of neonatal services.

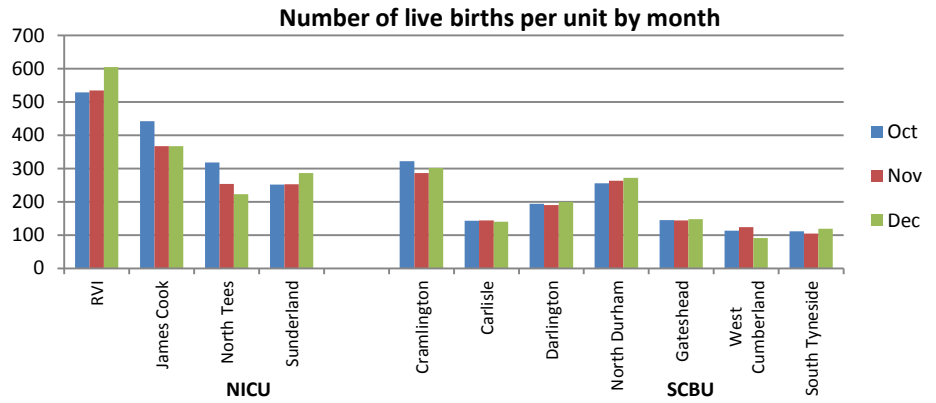
As always, the aim of this is to provide the very best service available to the babies and families within our Network and thus meet our one core principle – *“To give the highest possible standard of safe, effective care to babies and their families.”*

Martyn Boyd, Network Manager/Mark Green, Network Data Manager  
February 2016

## Section 1 - Activity

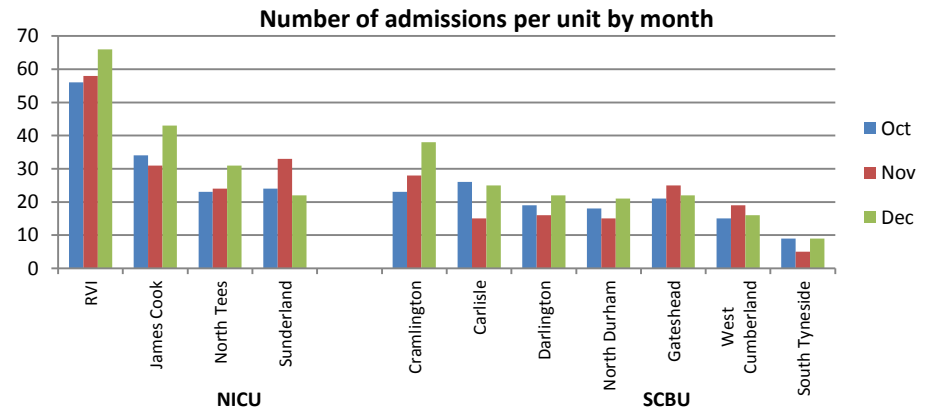
### Live Births

Unit	Oct	Nov	Dec	Total
RVI	529	535	605	1669
James Cook	442	367	367	1176
North Tees	318	254	223	795
Sunderland	252	253	287	792
Cramlington	322	287	302	911
Carlisle	143	144	140	427
Darlington	194	190	200	584
North Durham	256	263	272	791
Gateshead	145	144	148	437
West Cumberland	113	124	91	328
South Tyneside	111	105	119	335
<b>Total</b>	<b>2825</b>	<b>2666</b>	<b>2754</b>	<b>8245</b>



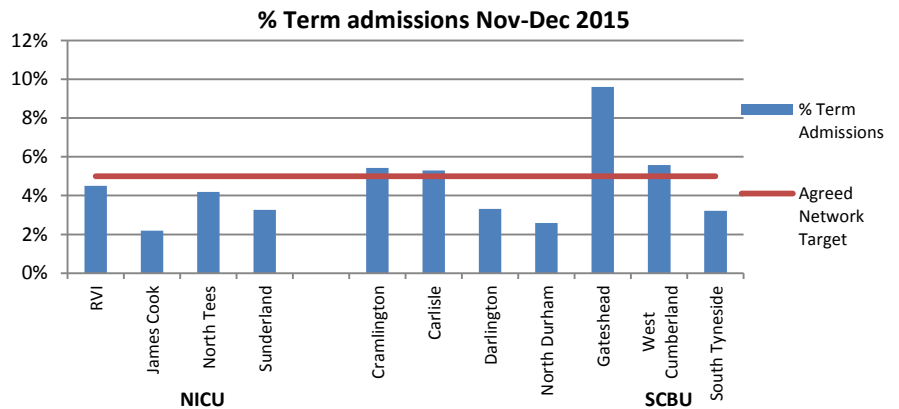
### Admissions

Unit	Oct	Nov	Dec	Total
RVI	56	58	66	180
James Cook	34	31	43	108
North Tees	23	24	31	78
Sunderland	24	33	22	79
Cramlington	23	28	38	89
Carlisle	26	15	25	66
Darlington	19	16	22	57
North Durham	18	15	21	54
Gateshead	21	25	22	68
West Cumberland	15	19	16	50
South Tyneside	9	5	9	23
<b>Total</b>	<b>268</b>	<b>269</b>	<b>315</b>	<b>852</b>



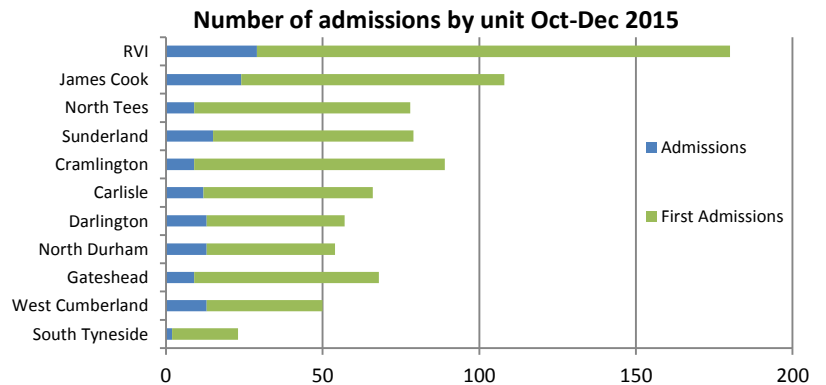
### Term Admissions<sup>1</sup>

Unit	Oct	Nov	Dec	Average
RVI**	4.5%	4.6%	4.4%	4.5%
James Cook	2.2%	1.5%	2.9%	2.2%
North Tees	3.4%	3.8%	5.8%	4.2%
Sunderland	3.0%	5.1%	1.9%	3.3%
Cramlington	3.3%	7.1%	6.1%	5.4%
Carlisle	4.5%	5.2%	6.1%	5.3%
Darlington	3.9%	3.4%	2.7%	3.3%
North Durham	2.1%	1.2%	4.3%	2.6%
Gateshead	8.2%	8.2%	12.4%	9.6%
West Cumberland	4.8%	6.1%	5.9%	5.6%
South Tyneside	1.9%	2.0%	5.4%	3.2%
<b>Network Average</b>	<b>3.9%</b>	<b>4.7%</b>	<b>5.8%</b>	<b>4.8%</b>



### All Admissions

Unit	Total Admissions	1st Admissions	Term Admissions
RVI**	180	151	70
James Cook	108	84	24
North Tees	78	69	31
Sunderland	79	64	24
Cramlington	89	80	46
Carlisle	66	54	21
Darlington	57	44	18
North Durham	54	41	19
Gateshead	68	59	39
West Cumberland	50	37	17
South Tyneside	23	21	10
<b>Total</b>	<b>852</b>	<b>704</b>	<b>319</b>

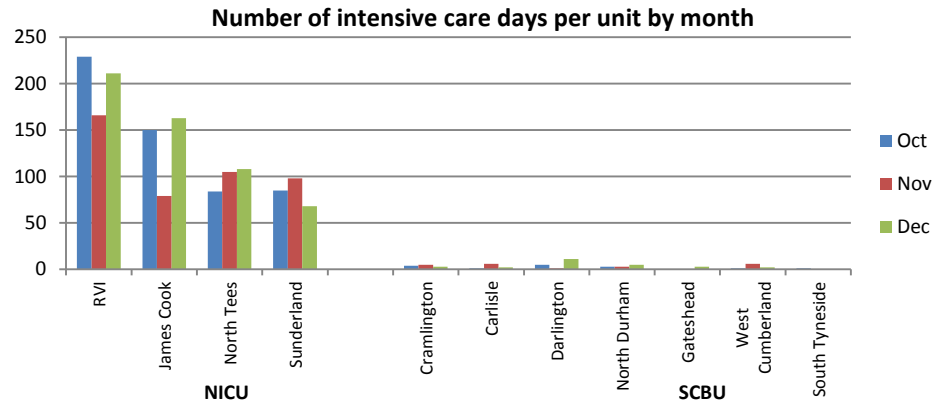


<sup>1</sup> Calculated using 1<sup>st</sup> episodes admissions and total births less 7% "preterm births" suggested average as per NNN agreement.

\*\*RVI includes unavoidable "congenital abnormality" term admissions.

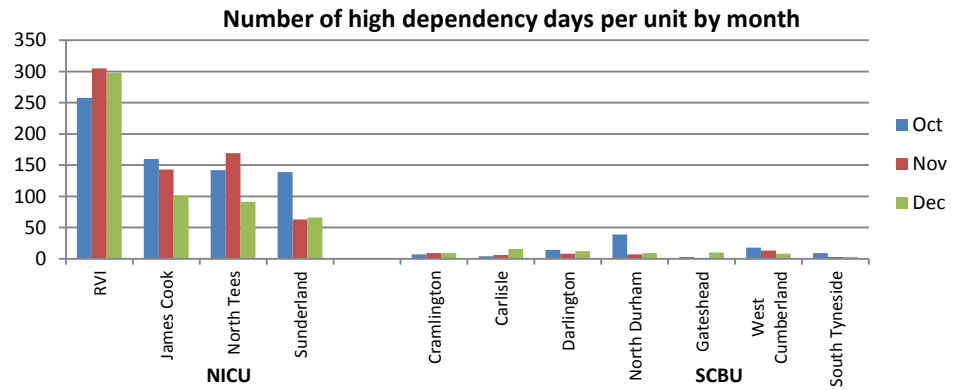
### IC Days

Unit	Oct	Nov	Dec	Total
RVI	229	166	211	606
James Cook	150	79	163	392
North Tees	84	105	108	297
Sunderland	85	98	68	251
Cramlington	4	5	3	12
Carlisle	1	6	2	9
Darlington	4	1	11	17
North Durham	3	3	5	11
Gateshead	0	0	3	3
West Cumberland	1	6	2	9
South Tyneside	1	0	0	1
<b>Total</b>	<b>563</b>	<b>469</b>	<b>576</b>	<b>1608</b>



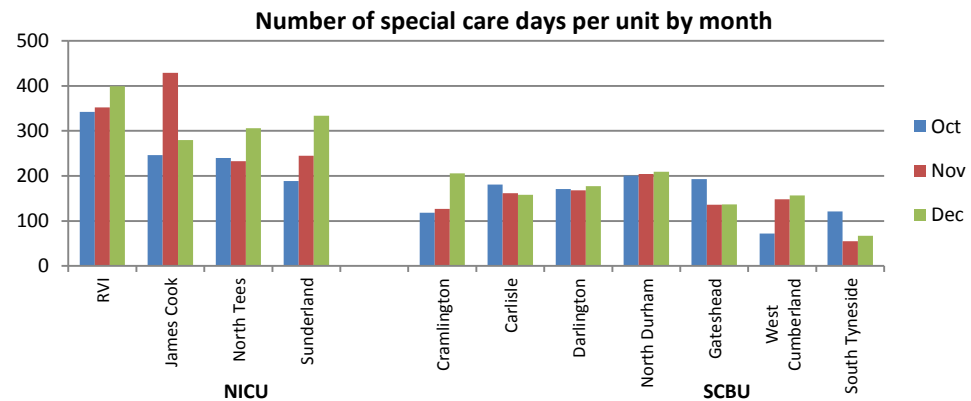
### HD Days

Unit	Oct	Nov	Dec	Total
RVI	258	305	298	861
James Cook	160	143	101	404
North Tees	142	169	91	402
Sunderland	139	63	66	268
Cramlington	7	9	9	25
Carlisle	4	6	16	26
Darlington	14	8	12	34
North Durham	39	7	9	55
Gateshead	3	0	10	13
West Cumberland	18	13	8	39
South Tyneside	9	3	3	15
<b>Total</b>	<b>793</b>	<b>726</b>	<b>623</b>	<b>2142</b>



### SC Days

Unit	Oct	Nov	Dec	Total
RVI	342	352	399	1093
James Cook	246	429	280	955
North Tees	240	233	306	779
Sunderland	189	245	334	768
Cramlington	118	127	206	451
Carlisle	181	162	158	501
Darlington	171	168	177	516
North Durham	201	204	209	614
Gateshead	193	136	137	466
West Cumberland	72	148	157	377
South Tyneside	121	55	67	243
<b>Total</b>	<b>2074</b>	<b>2259</b>	<b>2430</b>	<b>6763</b>



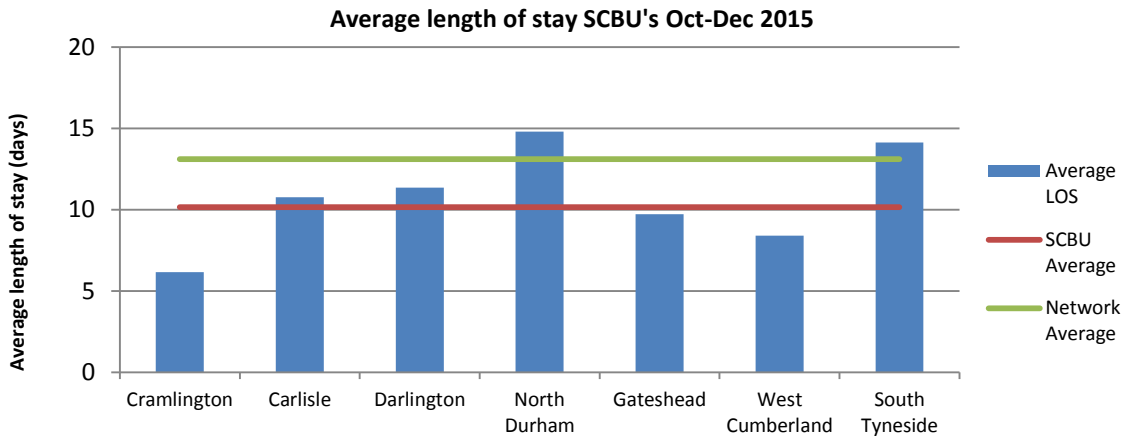
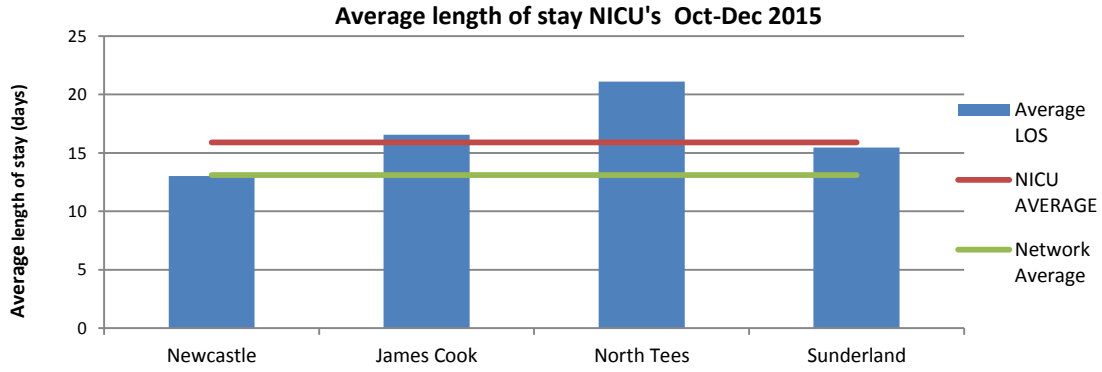
### NC Days

Unit	Oct	Nov	Dec	Total
RVI	19	23	12	54
James Cook	0	0	0	0
North Tees	20	13	27	60
Sunderland	0	0	0	0
Cramlington	24	28	20	72
Carlisle	44	59	48	151
Darlington	3	8	2	13
North Durham	4	4	1	9
Gateshead	42	43	64	149
West Cumberland	0	11	21	32
South Tyneside	0	0	0	0
<b>Total</b>	<b>156</b>	<b>189</b>	<b>195</b>	<b>540</b>

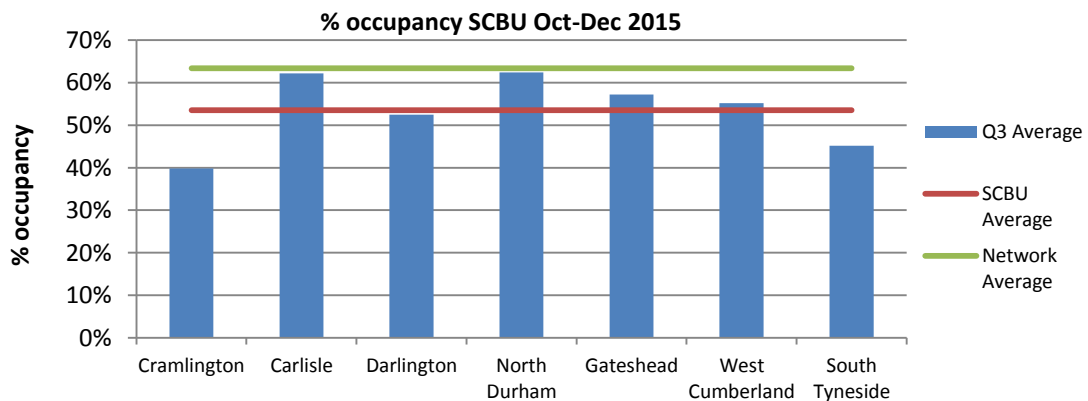
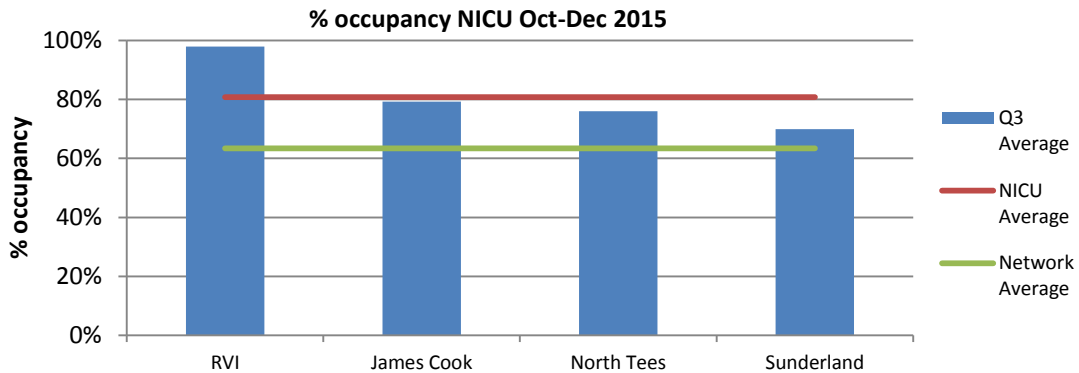
### TC Days

Unit	Oct	Nov	Dec	Total
RVI	383	398	329	1110
James Cook	0	0	0	0
North Tees	37	22	43	102
Sunderland	0	0	0	0
Cramlington	24	28	20	72
Carlisle	12	9	9	30
Darlington	96	108	125	329
North Durham	87	114	179	380
Gateshead	3	2	2	10
West Cumberland	0	0	0	0
South Tyneside	0	0	0	0
<b>Total</b>	<b>645</b>	<b>681</b>	<b>707</b>	<b>2033</b>

## Section 2 – Length of Stay<sup>2</sup>



## Section 3 – Occupancy<sup>3</sup>



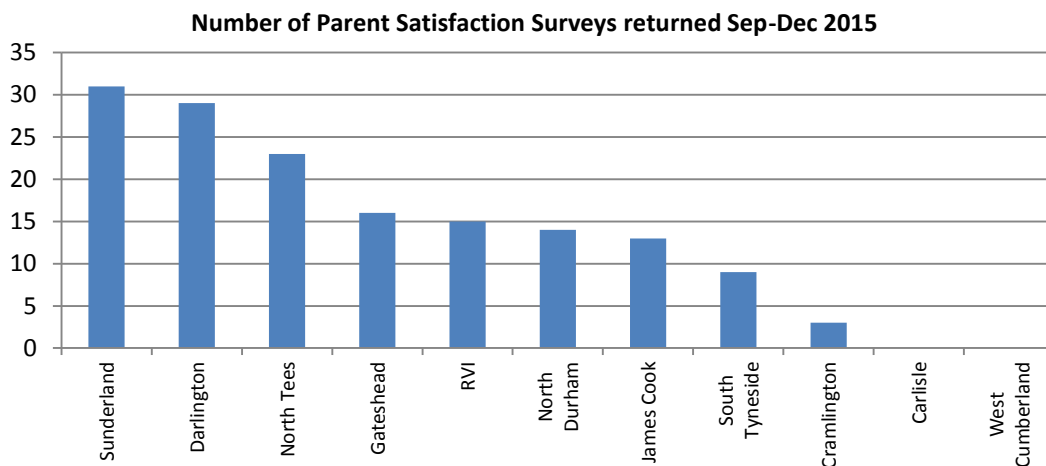
<sup>2</sup> Calculated using total discharges >4hrs, not died, and total length of stay.

<sup>3</sup> Calculated using available total cot numbers and occupancy levels

## Section 4a – Clinical Indicators<sup>4</sup>

Period:	National CQUIN				NNAP				
	Q3 15-16				Q3 15-16				
Unit	Timely discharge - eligible babies	TPN by Day 2 of Life	2yr Follow up form complete	Temperature on admission >=36	Temperature Taken within 1hr (<29/40)	Antenatal Steroids Given	First Consultation within 24hrs	Breast Milk at Discharge Home (<33/40)	ROP screening
Unit A	100%	N/A	N/A	100%	100%	92%	98%	100%	40%
Unit B	86%	100%	86%	83%	78%	71%	87%	54%	92%
Unit C	50%	100%	67%	82%	81%	74%	59%	42%	75%
Unit D	67%	N/A	0%	75%	100%	70%	66%	33%	100%
Unit E	100%	N/A	0%	100%	100%	82%	69%	50%	100%
Unit F	25%	N/A	N/A	100%	N/A	25%	94%	N/A	100%
Unit G	55%	81%	57%	100%	100%	94%	79%	37%	55%
Unit H	67%	100%	60%	100%	100%	90%	95%	50%	93%
Unit I	0%	N/A	0%	50%	100%	71%	94%	0%	80%
Unit J	80%	N/A	100%	100%	100%	100%	95%	33%	100%
Unit K	67%	N/A	0%	100%	100%	81%	91%	75%	100%
<b>Northern</b>	<b>63%</b>	<b>95%</b>	<b>41%</b>	<b>90%</b>	<b>96%</b>	<b>77%</b>	<b>84%</b>	<b>47%</b>	<b>85%</b>

## Section 4b – Non-clinical Indicators



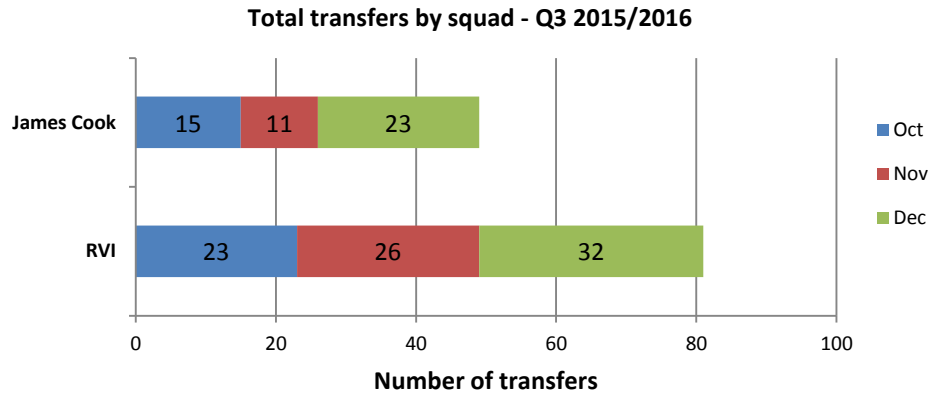
## Section 5 – Network Audit & data/information compliance<sup>5</sup>

<sup>4</sup> These are taken from the BadgerNet Dashboard reports for national CQUINs and NNAP Metrics. The former may not be what individual Units have signed up to but are included with the NNAP figures (which will appear on their reports in due course) for benchmarking purpose only

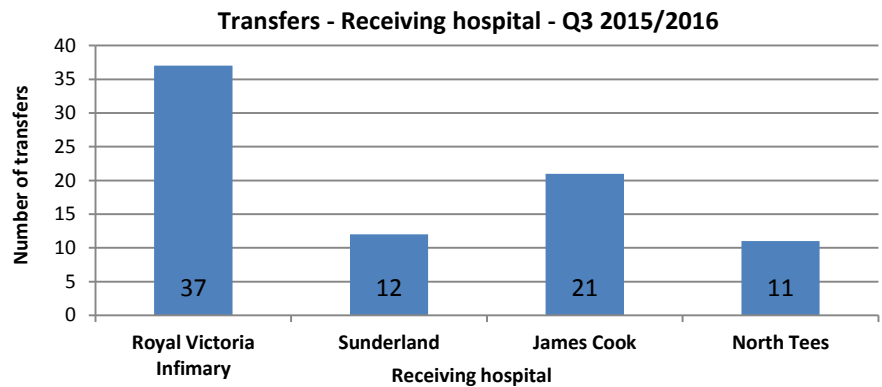
<sup>5</sup> Requested items as identified and defined by the Network as auditable will appear here in future reports, including Monthly Dashboard returns, where the deadline for submission will be 6 weeks after the end of the quarter being requested.

## Section 6 – Transport

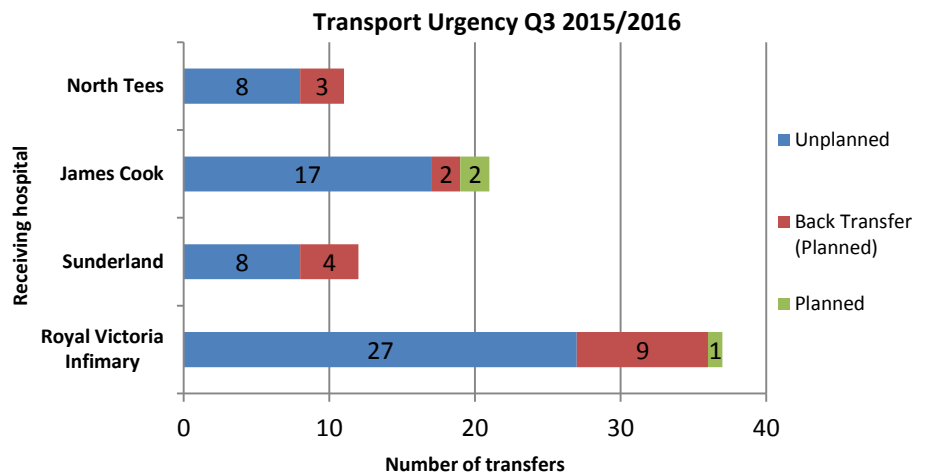
These figures represent the total number of transfers undertaken by each team per month, including back-transfers



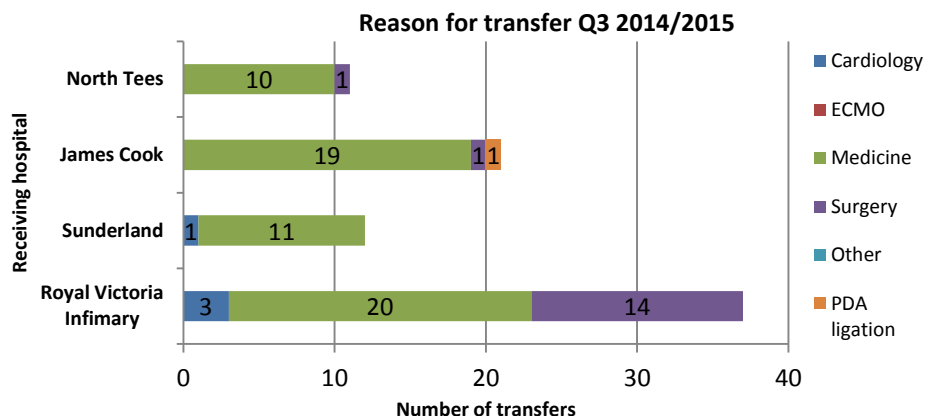
These figures represent the total number of transfers from each of the Level 3 (NICU) Units across the quarter. These include back-transfers (see next chart below).



Definitions of urgency are subjective apart from planned back-transfers. The definition of “planned” here is where the need for transfer appears to have been known – such as for surgical cases and cardiac investigations etc. Unplanned would be defined as where transfer could not have been foreseen – such as a baby requiring ongoing care at another Unit that could not be provided at their own.



Such classifications can again also be subjective, but where there is enough clarity to suggest it, they have been coded as such in the following table. “Other” covers occasional cases such as ROP screening or laser surgery. PDA ligations usually go direct to the Freeman, but if they are referred to another NICU first, they will be coded as a PDA Ligation accordingly.



## Non-medical transfers due to cot availability.

NICU	Transfers out
RVI	3
JCUH	1
North Tees	0
Sunderland	0

