



Northern Neonatal Network

Quarterly Report

Q2 Jul-Sep 15



This report is a summary of the dashboard data submitted every month by each of the 9 Trusts that make up the Northern Neonatal Network. These figures are taken from both the BadgerNet Database where the required data is available and the Dashboard returns that have been supplied to Mark each month.

It is important to note the following when looking at these reports;

- As from 1st April 2015, all reports use the BAPM 2011 definitions, NOT the previous BAPM 2001 used in all reports to date. There are significant differences in how these newer levels of care are calculated and these newer reports need to be considered accordingly. There are significant differences, for example, in how IC no longer routinely includes babies on CPAP by default, rather taking account of other clinical indicators – weight, gestation etc.
- The BAPM 2011 definitions include a new “Normal Care” category. If ONLY “Carer resident – caring for baby” or the “None or >4hourly intervals” for observations/monitoring on the “general summary” page is ticked, this will classify as a “normal care” day. Under current commissioning guidance, unlike “special care” days, these are not funded. We have included these days as they are what the system reflects for each Unit. ***You may wish to check these for future reporting purposes.***
- The staffing level reports are now calculated by mapping nurse staffing levels submitted against the activity generated by the new BAPM 2011 definitions and have altered from typical levels under BAPM 2001 accordingly.
- The definitions for each of the included items are those given on the dashboard.
- The reports relating to transfers in Section 3 are taken entirely from the transport record sheets completed by the two teams from the RVI and JCUH. Interpretation of these in respect of some of the coding (particularly relating to “urgency”) is often highly subjective, but to minimise this, we have tried to rely on just a few key definitions that may still provide a useful indication of our Network’s transport team’s activity. The charts are therefore accompanied by some boxes that explain the basis for the definitions used.
- The data for South Tyneside is showing as “incomplete” for most of this quarter so we have not been able to verify accuracy, but have included what is available from BadgerNet.

We continue to invite constructive criticism and feedback from all our Stakeholders across the Network and have taken into account some of these in this latest version of quarterly reports. It is our hope that these quarterly Reports will continue to provide a rich but useful source of data for both Network and individual Units/Trusts and help determine issues across the Network in all our Units in relation to their activity and capacity, thus informing future strategic discussions and planning of neonatal services.

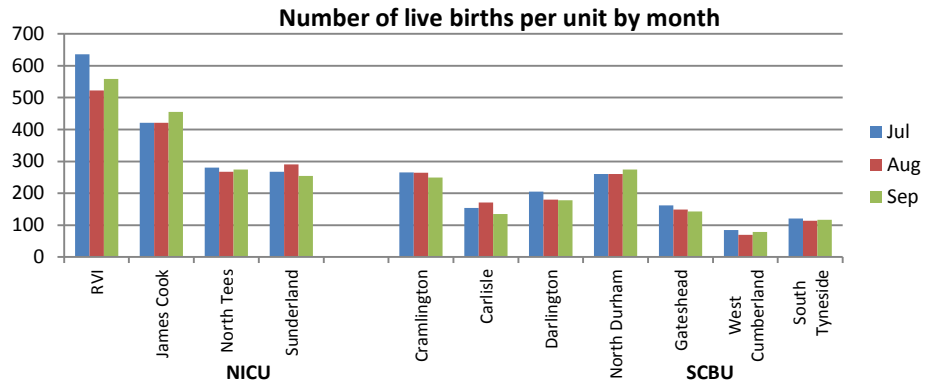
As always, the aim of this is to provide the very best service available to the babies and families within our Network and thus meet our one core principle – *“To give the highest possible standard of safe, effective care to babies and their families.”*

Martyn Boyd, Network Manager/Mark Green, Network Data Manager
November 2015

Section 1 - Activity

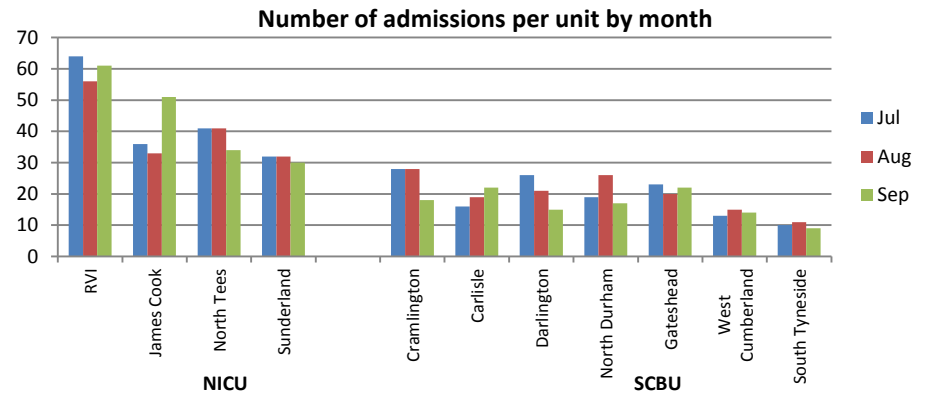
Live Births

Unit	Jul	Aug	Sep	Total
RVI	636	523	559	1718
James Cook	421	421	455	1297
North Tees	281	267	274	822
Sunderland	267	291	254	812
Cramlington	265	264	249	778
Carlisle	154	171	135	460
Darlington	205	180	178	563
North Durham	260	260	274	794
Gateshead	162	149	143	454
West Cumberland	85	70	79	204
South Tyneside	121	114	117	352
Total	2857	2680	2717	8254



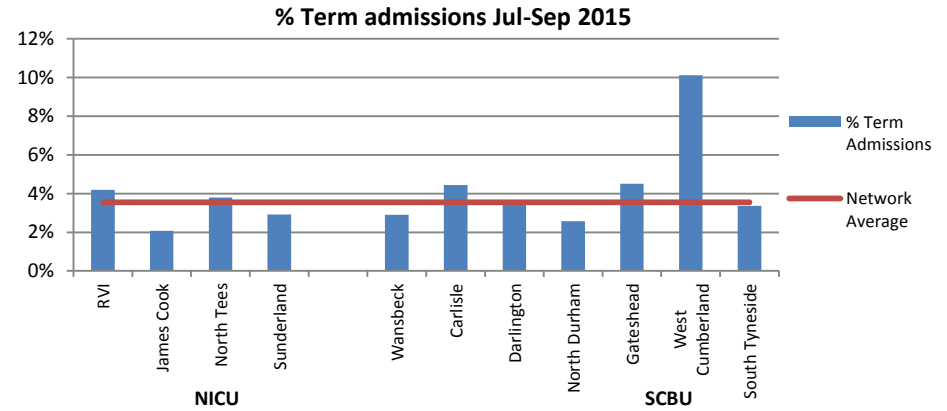
Admissions

Unit	Jul	Aug	Sep	Total
RVI	64	56	61	181
James Cook	36	33	51	120
North Tees	41	41	34	116
Sunderland	32	32	30	94
Cramlington	28	28	18	74
Carlisle	26	21	15	57
Darlington	26	21	15	62
North Durham	19	26	17	62
Gateshead	23	20	22	65
West Cumberland	13	15	14	42
South Tyneside	10	11	9	30
Total	308	302	293	903



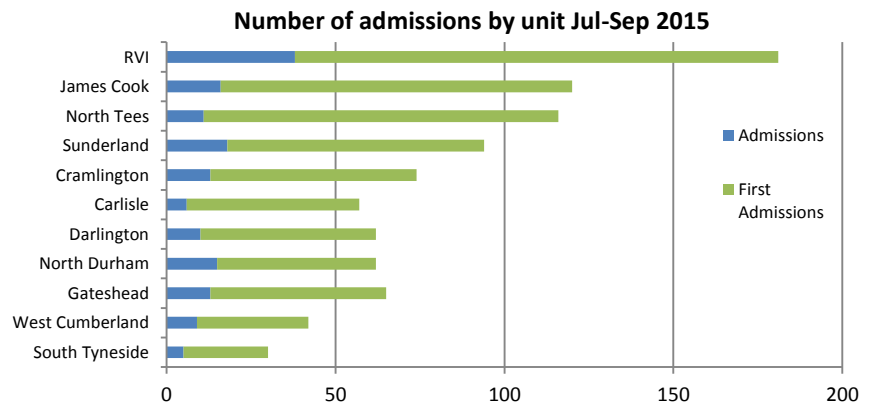
Term Admissions¹

Unit	Jul	Aug	Sep	Average
RVI	4.7%	4.1%	3.7%	4.2%
James Cook	3.1%	1.8%	1.4%	2.1%
North Tees	4.2%	3.6%	3.5%	3.8%
Sunderland	4.0%	1.8%	3.0%	2.9%
Cramlington	2.8%	2.9%	3.0%	2.9%
Carlisle	7.7%	3.1%	2.4%	4.4%
Darlington	2.1%	3.0%	6.0%	3.6%
North Durham	1.2%	2.5%	3.9%	2.6%
Gateshead	2.0%	4.3%	9.5%	4.5%
West Cumberland	3.8%	18.4%	9.5%	10.1%
South Tyneside	3.6%	1.9%	4.6%	3.4%
Network Average	3.6%	3.3%	3.7%	3.5%



All Admissions

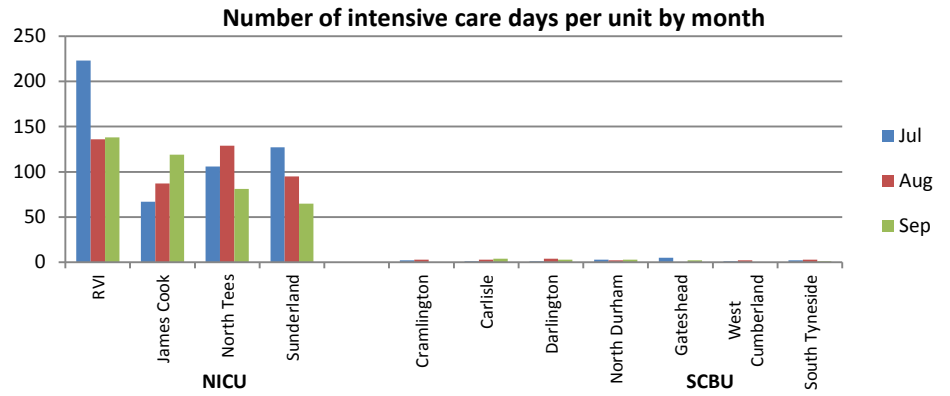
Unit	Total Admissions	1st Admissions	Term Admissions
RVI	181	143	67
James Cook	120	104	25
North Tees	116	105	29
Sunderland	94	76	22
Cramlington	74	61	21
Carlisle	57	51	19
Darlington	62	52	19
North Durham	62	57	19
Gateshead	65	52	19
West Cumberland	42	33	22
South Tyneside	30	25	11
Total	903	749	273



¹ Calculated using 1st episodes admissions and total births less 7% "preterm births" suggested average as per NNN agreement.

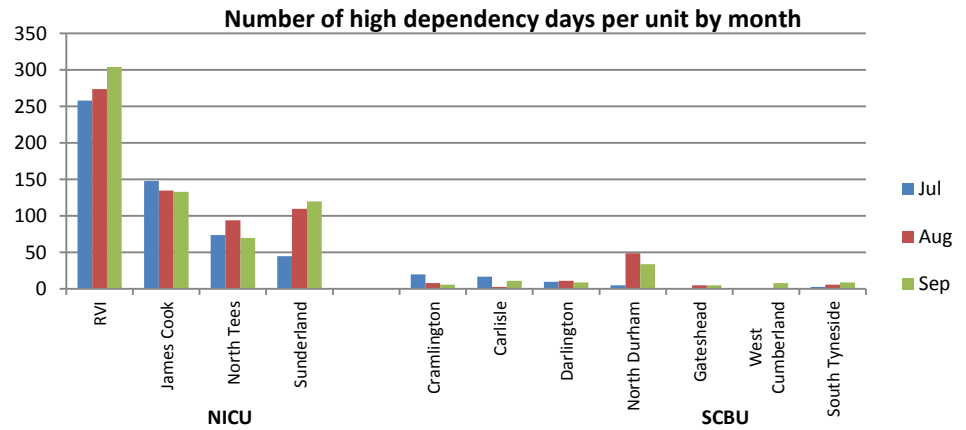
IC Days

Unit	Jul	Aug	Sep	Total
RVI	223	136	138	497
James Cook	67	87	119	273
North Tees	106	129	81	316
Sunderland	127	95	65	287
Cramlington	2	3	0	5
Carlisle	1	3	4	8
Darlington	1	4	3	8
North Durham	3	2	3	8
Gateshead	5	0	2	7
West Cumberland	1	2	0	3
South Tyneside	2	3	1	6
Total	538	464	416	1418



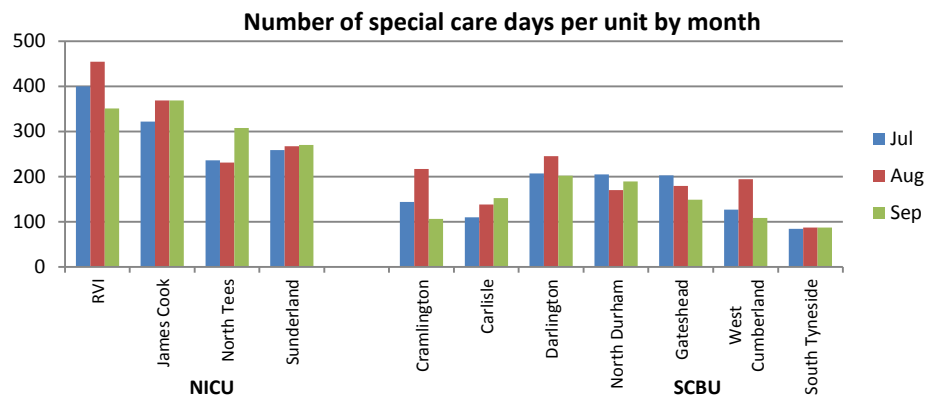
HD Days

Unit	Jul	Aug	Sep	Total
RVI	258	274	304	836
James Cook	148	135	133	416
North Tees	74	94	70	238
Sunderland	45	110	120	275
Cramlington	20	8	6	34
Carlisle	17	3	11	31
Darlington	10	11	9	30
North Durham	5	49	34	88
Gateshead	1	5	5	11
West Cumberland	0	0	8	8
South Tyneside	3	6	9	18
Total	581	695	709	1985



SC Days

Unit	Jul	Aug	Sep	Total
RVI	400	455	351	1206
James Cook	322	369	369	1060
North Tees	236	234	308	775
Sunderland	259	267	270	796
Cramlington	144	217	106	467
Carlisle	110	138	152	400
Darlington	207	245	202	654
North Durham	205	170	189	564
Gateshead	203	179	149	531
West Cumberland	127	194	108	429
South Tyneside	84	87	87	258
Total	2297	2552	2291	7140



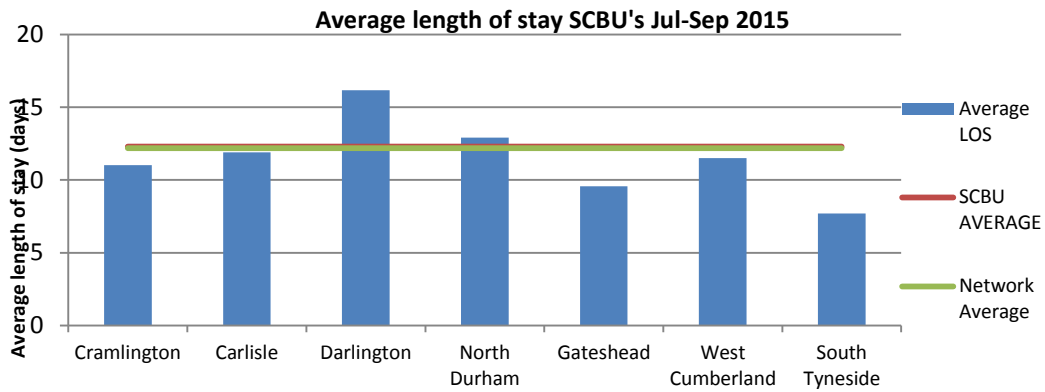
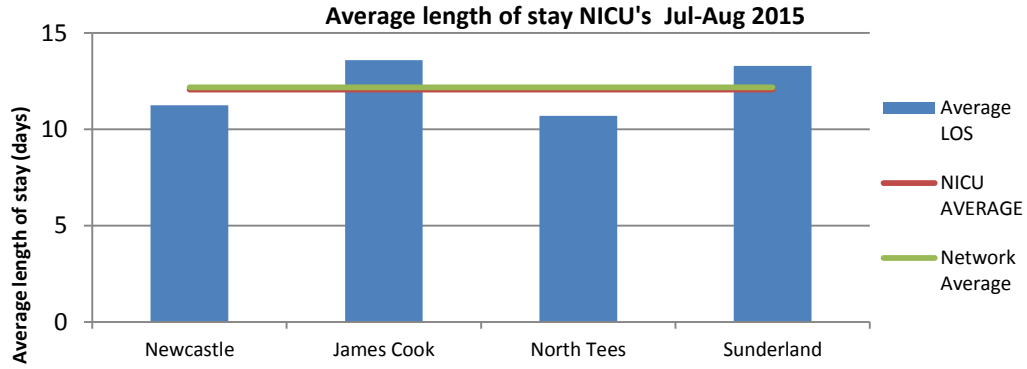
NC Days

Unit	Jul	Aug	Sep	Total
RVI	26	31	18	75
James Cook	0	0	0	0
North Tees	12	15	20	47
Sunderland	7	0	0	7
Cramlington	18	27	10	55
Carlisle	30	36	37	103
Darlington	3	5	2	10
North Durham	4	8	4	16
Gateshead	26	21	8	55
West Cumberland	0	0	0	0
South Tyneside	0	0	0	0
Total	126	143	99	368

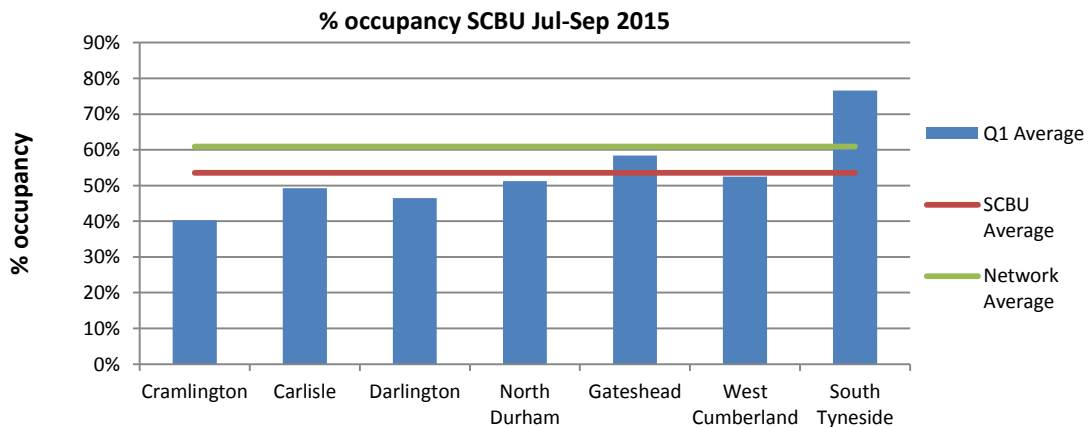
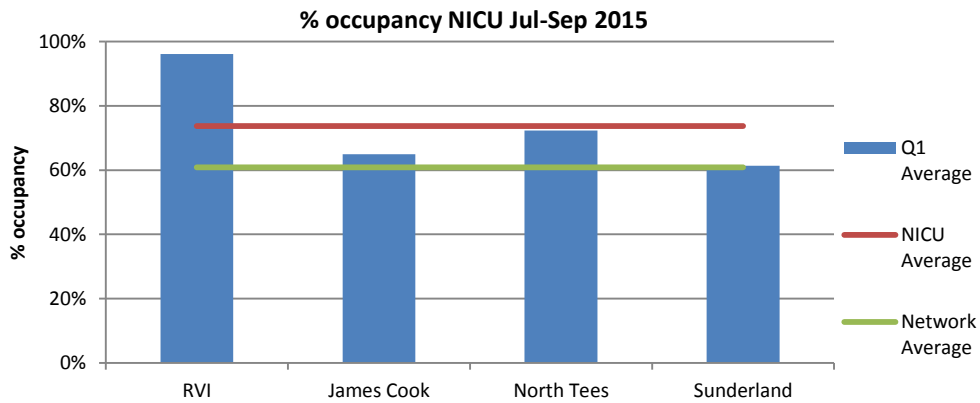
TC Days

Unit	Jul	Aug	Sep	Total
RVI	334	372	363	1069
James Cook	0	0	0	0
North Tees	27	17	32	76
Sunderland	0	0	0	0
Cramlington	24	42	25	91
Carlisle	9	15	23	47
Darlington	124	104	82	310
North Durham	170	151	126	447
Gateshead	7	3	4	14
West Cumberland	0	0	0	0
South Tyneside	0	0	0	0
Total	695	704	655	2054

Section 2 – Length of Stay²



Section 3 – Occupancy³



² Calculated using total discharges >4hrs, not died, and total length of stay.

³ Calculated using available total cot numbers and occupancy levels

Section 4a – Clinical Indicators⁴

Period:	National CQUIN				NNAP				
	Q2 15-16				Q2 15-16				
Unit	Timely discharge - eligible babies	TPN by Day 2 of Life	2yr Follow up	Temperature on admission	Temperature Taken within 1hr (<29/40)	Antenatal Steroids Given	First Consultation within 24hrs	Breast Milk at Discharge Home (<33/40)	ROP screening
Unit A	100%	N/A	N/A	100%	N/A	86%	95%	33%	83%
Unit B	60%	100%	100%	82%	100%	80%	88%	13%	92%
Unit C	0%	100%	93%	95%	100%	83%	73%	63%	93%
Unit D	N/A	N/A	0%	100%	100%	40%	78%	N/A	80%
Unit E	75%	N/A	0%	100%	50%	80%	67%	0%	83%
Unit F	0%	N/A	0%	100%	100%	38%	87%	0%	67%
Unit G	71%	73%	90%	95%	89%	83%	86%	71%	56%
Unit H	75%	100%	80%	96%	100%	90%	99%	36%	94%
Unit I	44%	N/A	0%	100%	100%	77%	90%	100%	67%
Unit J	100%	N/A	100%	90%	100%	75%	100%	N/A	100%
Unit K	0%	N/A	0%	100%	N/A	90%	64%	0%	75%
Northern	48%	93%	46%	87%	84%	67%	78%	35%	74%

Section 4b – Non-clinical Indicators

Parent App Feedback and Network Survey data may appear here in future reports

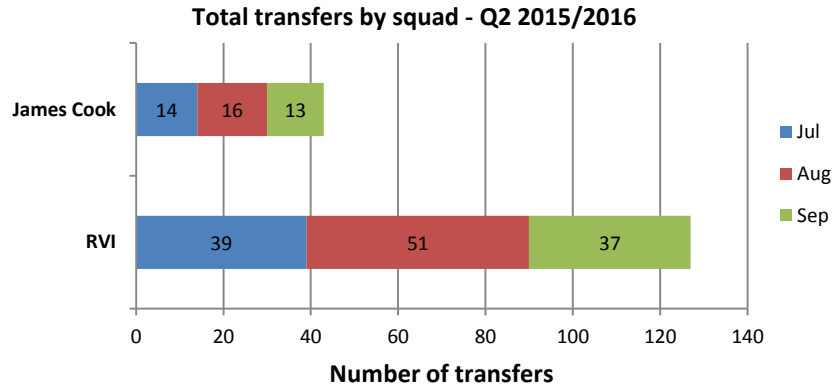
Section 5 – Network Audit & data/information compliance⁵

⁴ These are taken from the BadgerNet Dashboard reports for national CQUINs and NNAP Metrics. The former may not be what individual Units have signed up to but are included with the NNAP figures (which will appear on their reports in due course) for benchmarking purpose only

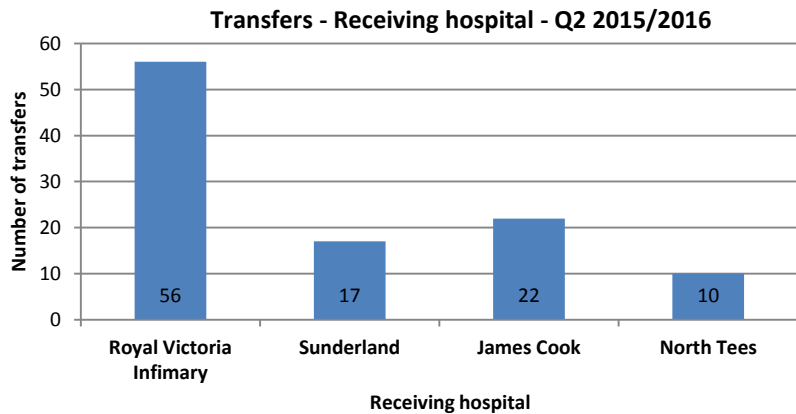
⁵ Requested items as identified and defined by the Network as auditable will appear here in future reports, including Monthly Dashboard returns, where the deadline for submission will be 6 weeks after the end of the quarter being requested.

Section 6 – Transport

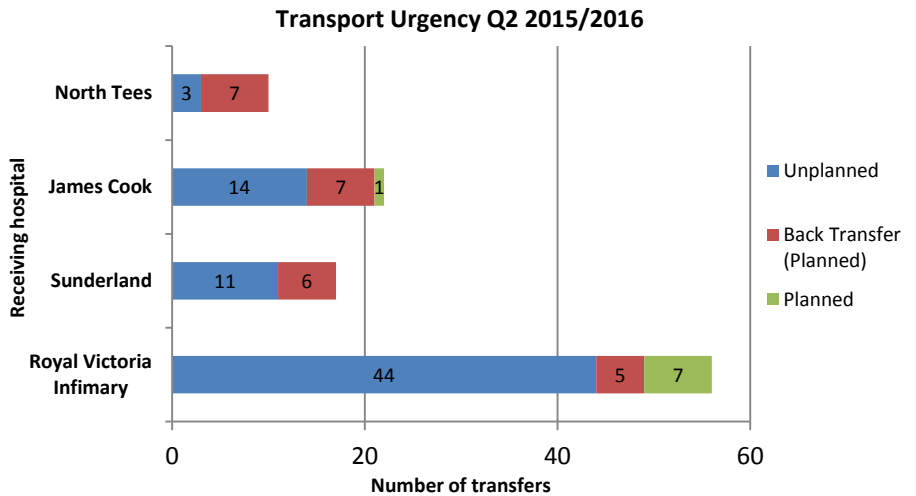
These figures represent the total number of transfers undertaken by each team per month, including back-transfers



These figures represent the total number of transfers from each of the Level 3 (NICU) Units across the quarter. These include back-transfers (see next chart below).



Definitions of urgency are subjective apart from planned back-transfers. The definition of “planned” here is where the need for transfer appears to have been known – such as for surgical cases and cardiac investigations etc. Unplanned would be defined as where transfer could not have been foreseen – such as a baby requiring ongoing care at another Unit that could not be provided at their own.



Such classifications can again also be subjective, but where there is enough clarity to suggest it, they have been coded as such in the following table. “Other” covers occasional cases such as ROP screening or laser surgery. PDA ligations usually go direct to the Freeman, but if they are referred to another NICU first, they will be coded as a PDA Ligation accordingly.

