



# Northern Neonatal Network

## Quarterly Report

### Q1 Apr-Jun 15



This report is a summary of the dashboard data submitted every month by each of the 9 Trusts that make up the Northern Neonatal Network. These figures are taken from both the BadgerNet Database where the required data is available and the Dashboard returns that have been supplied to Mark each month.

It is important to note the following when looking at these reports;

- As from 1<sup>st</sup> April 2015, all reports use the BAPM 2011 definitions, NOT the previous BAPM 2001 used in all reports to date. There are significant differences in how these newer levels of care are calculated and these newer reports need to be considered accordingly. There are significant differences, for example, in how IC no longer routinely includes babies on CPAP by default, rather taking account of other clinical indicators – weight, gestation etc.
- The BAPM 2011 definitions include a new “Normal Care” category. If ONLY “Carer resident – caring for baby” or the “None or >4hourly intervals” for observations/monitoring on the “general summary” page is ticked, this will classify as a “normal care” day. Under current commissioning guidance, unlike “special care” days, these are not funded. We have included these days as they are what the system reflects for each Unit. ***You may wish to check these for future reporting purposes.***
- The staffing level reports are now calculated by mapping nurse staffing levels submitted against the activity generated by the new BAPM 2011 definitions and have altered from typical levels under BAPM 2001 accordingly.
- The definitions for each of the included items are those given on the dashboard.
- The reports relating to transfers in Section 3 are taken entirely from the transport record sheets completed by the two teams from the RVI and JCUH. Interpretation of these in respect of some of the coding (particularly relating to “urgency”) is often highly subjective, but to minimise this, we have tried to rely on just a few key definitions that may still provide a useful indication of our Network’s transport team’s activity. The charts are therefore accompanied by some boxes that explain the basis for the definitions used.
- The data for South Tyneside is showing as “incomplete” for most of this quarter so we have not been able to verify accuracy, but have included what is available from BadgerNet.

We continue to invite constructive criticism and feedback from all our Stakeholders across the Network and have taken into account some of these in this latest version of quarterly reports. It is our hope that these quarterly Reports will continue to provide a rich but useful source of data for both Network and individual Units/Trusts and help determine issues across the Network in all our Units in relation to their activity and capacity, thus informing future strategic discussions and planning of neonatal services.

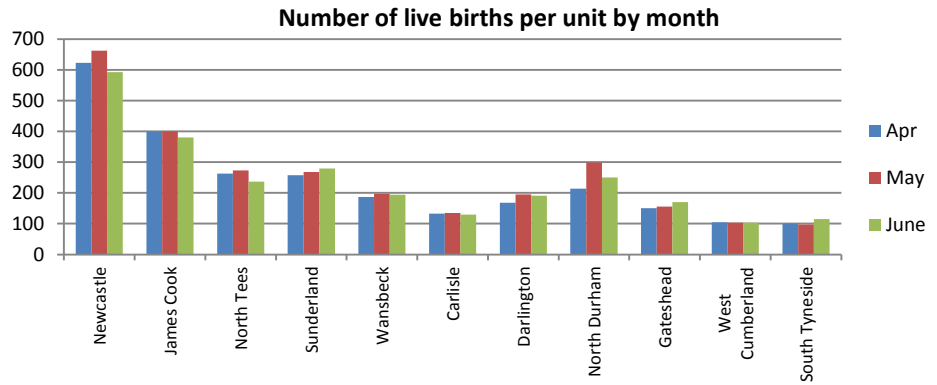
As always, the aim of this is to provide the very best service available to the babies and families within our Network and thus meet our one core principle – *“To give the highest possible standard of safe, effective care to babies and their families.”*

Martyn Boyd, Network Manager/Mark Green, Network Data Manager  
August 2015

## Section 1 - Activity

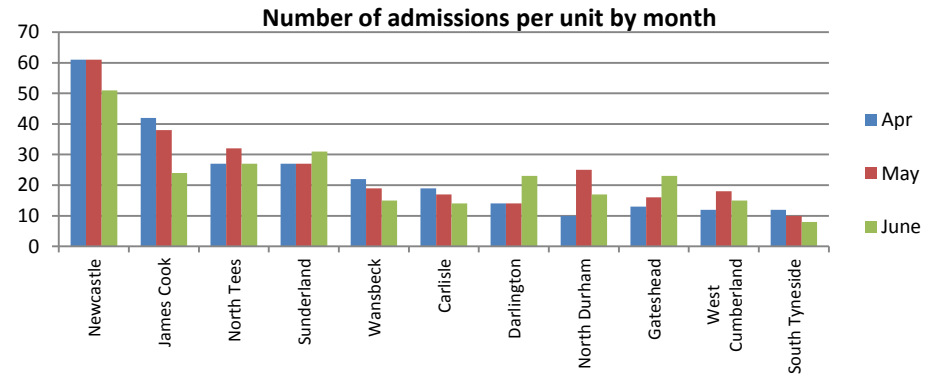
### Live Births

Unit	Apr	May	June	Total
Newcastle	623	662	592	1877
James Cook	400	400	380	1180
North Tees	263	273	237	773
Sunderland	257	268	279	804
Wansbeck	187	197	194	578
Carlisle	133	135	130	398
Darlington	168	195	191	554
North Durham	214	299	250	763
Gateshead	150	156	170	476
West Cumberland	105	104	104	313
South Tyneside	100	97	115	312
<b>Total</b>	<b>2600</b>	<b>2786</b>	<b>2262</b>	<b>7648</b>



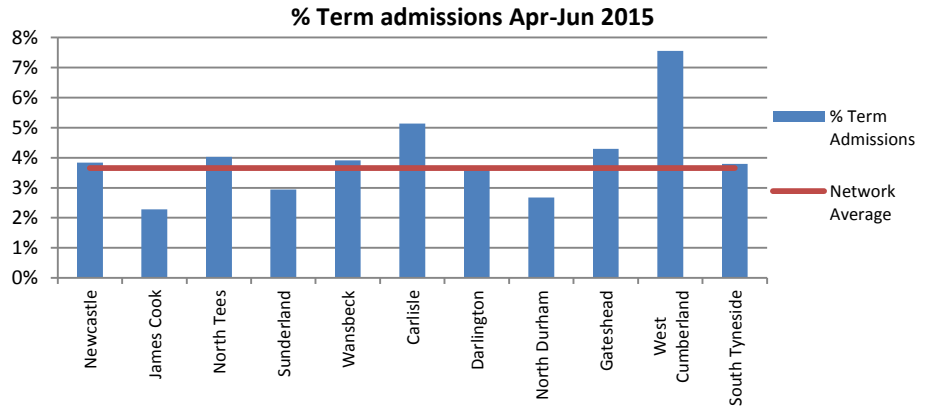
### Admissions

Unit	Apr	May	June	Total
Newcastle	61	61	51	173
James Cook	42	38	24	104
North Tees	27	32	27	86
Sunderland	27	27	31	85
Wansbeck	22	19	15	56
Carlisle	19	17	14	50
Darlington	14	14	23	51
North Durham	10	25	17	52
Gateshead	13	16	23	52
West Cumberland	12	18	15	45
South Tyneside	12	10	8	30
<b>Total</b>	<b>259</b>	<b>277</b>	<b>248</b>	<b>784</b>



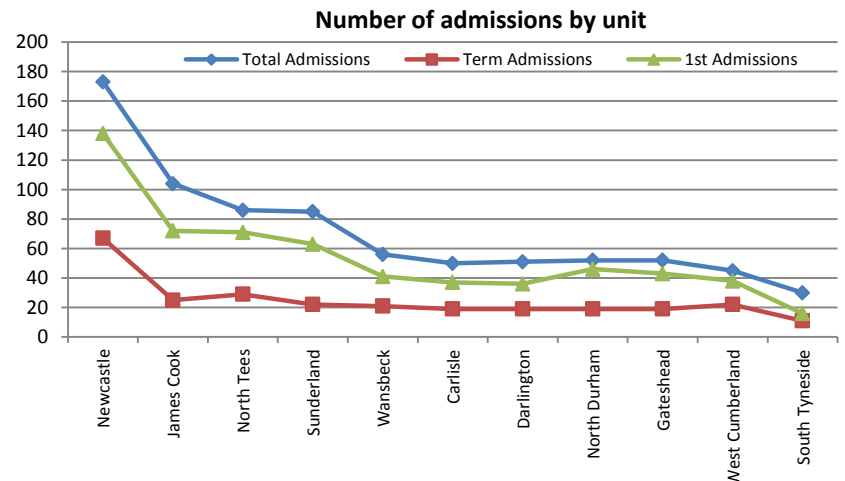
### Term Admissions<sup>1</sup>

Unit	Apr	May	Jun	Average
Newcastle	4.8%	3.2%	3.5%	3.8%
James Cook	3.2%	1.9%	1.7%	2.3%
North Tees	4.5%	3.5%	4.1%	4.0%
Sunderland	4.2%	2.0%	2.7%	2.9%
Wansbeck	4.0%	3.8%	3.9%	3.9%
Carlisle	8.9%	4.0%	2.5%	5.1%
Darlington	2.6%	2.8%	5.6%	3.7%
North Durham	1.5%	2.2%	4.3%	2.7%
Gateshead	2.2%	4.1%	6.3%	4.3%
West Cumberland	3.1%	12.4%	7.2%	7.6%
South Tyneside	4.3%	2.2%	4.7%	3.8%
<b>Network Average</b>	<b>4.0%</b>	<b>3.2%</b>	<b>3.8%</b>	<b>3.7%</b>



### All Admissions

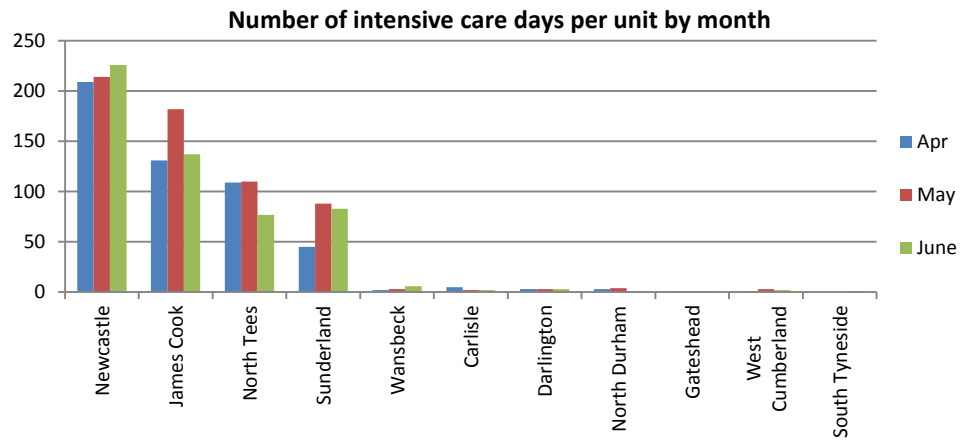
Unit	Total Admissions	1st Admissions	Term Admissions
Newcastle	173	138	67
James Cook	104	72	25
North Tees	86	71	29
Sunderland	85	63	22
Wansbeck	56	41	21
Carlisle	50	37	19
Darlington	51	36	19
North Durham	52	46	19
Gateshead	52	43	19
West Cumberland	45	38	22
South Tyneside	30	16	11



<sup>1</sup> Calculated using 1<sup>st</sup> episodes admissions and total births less 7% "preterm births" suggested average as per NNN agreement.

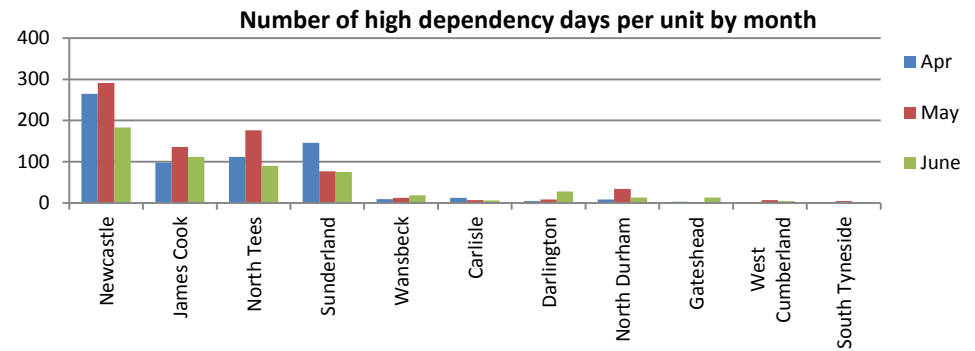
### IC Days

Unit	Apr	May	June	Total
Newcastle	209	214	226	649
James Cook	131	182	137	450
North Tees	109	110	77	296
Sunderland	45	88	83	216
Wansbeck	2	3	6	11
Carlisle	5	2	2	9
Darlington	3	3	3	9
North Durham	3	4	1	8
Gateshead	1	1	1	3
West Cumberland	1	3	2	6
South Tyneside	0	0	1	1
Total	509	610	539	1658



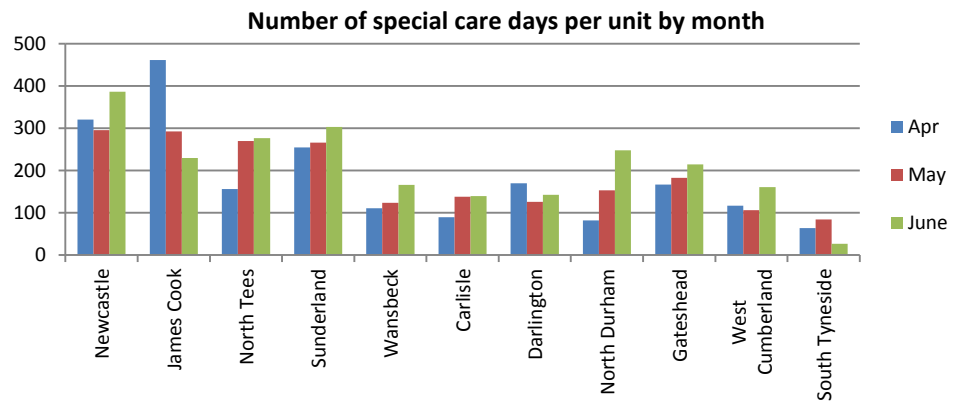
### HD Days

Unit	Apr	May	June	Total
Newcastle	265	291	183	739
James Cook	98	136	112	346
North Tees	112	176	90	378
Sunderland	146	77	75	298
Wansbeck	9	12	18	39
Carlisle	12	7	6	25
Darlington	4	8	28	40
North Durham	8	34	13	55
Gateshead	3	2	13	18
West Cumberland	0	7	4	11
South Tyneside	1	4	1	6
Total	658	754	543	1955



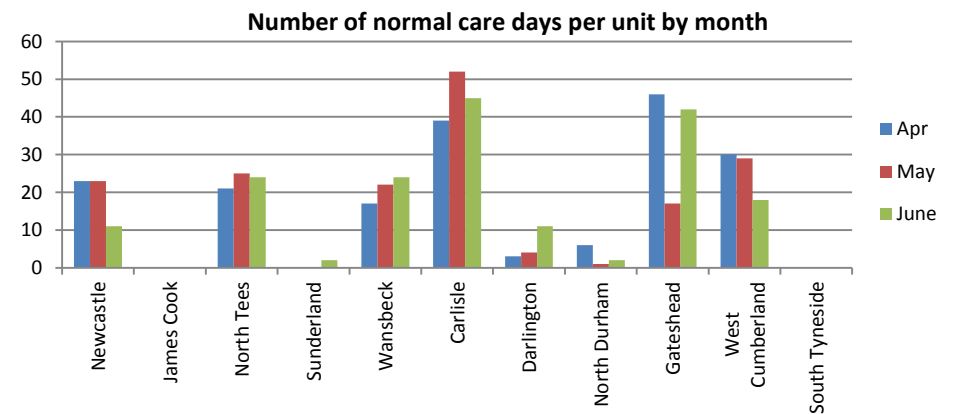
### SC Days

Unit	Apr	May	June	Total
Newcastle	321	296	387	1004
James Cook	462	293	230	985
North Tees	156	270	277	703
Sunderland	255	266	303	824
Wansbeck	111	124	166	401
Carlisle	90	138	140	368
Darlington	170	126	143	439
North Durham	82	153	248	483
Gateshead	167	183	215	565
West Cumberland	117	106	161	384
South Tyneside	64	84	27	175
Total	1995	2039	2297	6331



### NC Days

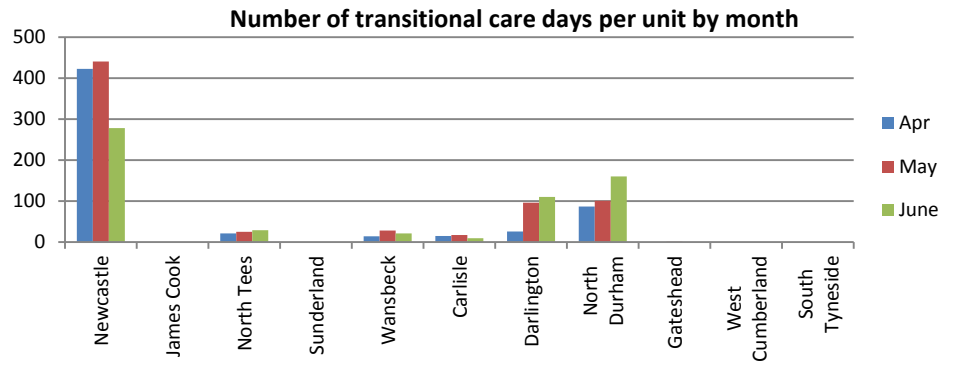
Unit	Apr	May	June	Total
Newcastle	23	23	11	57
James Cook	0	0	0	0
North Tees	21	25	24	70
Sunderland	0	0	2	2
Wansbeck	17	22	24	63
Carlisle	39	52	45	136
Darlington	3	4	11	18
North Durham	6	1	2	9
Gateshead	46	17	42	105
West Cumberland	30	29	18	77
South Tyneside	0	0	0	0
Total	185	173	179	537



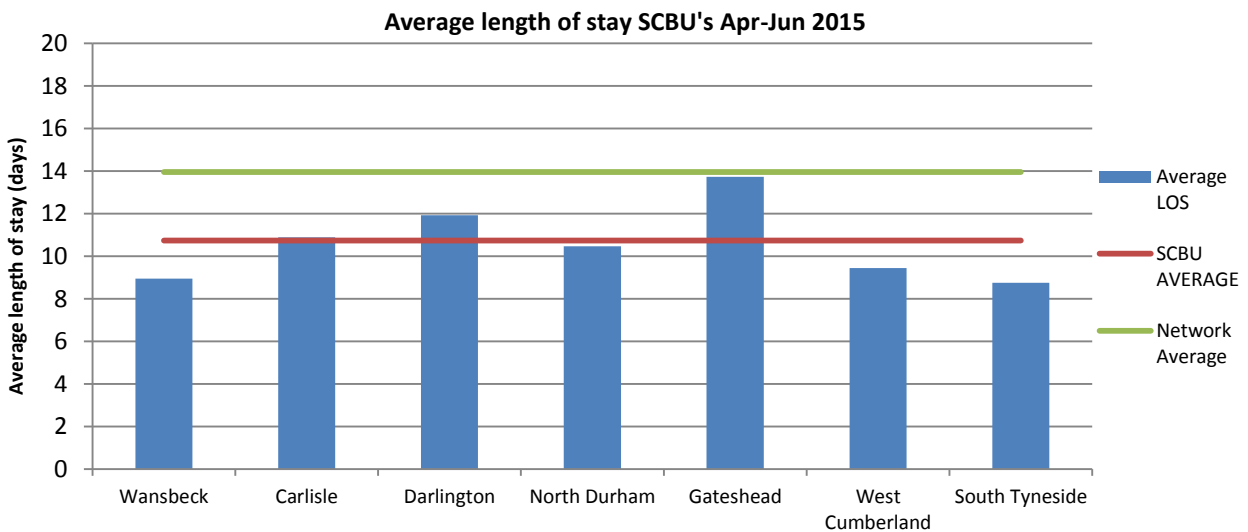
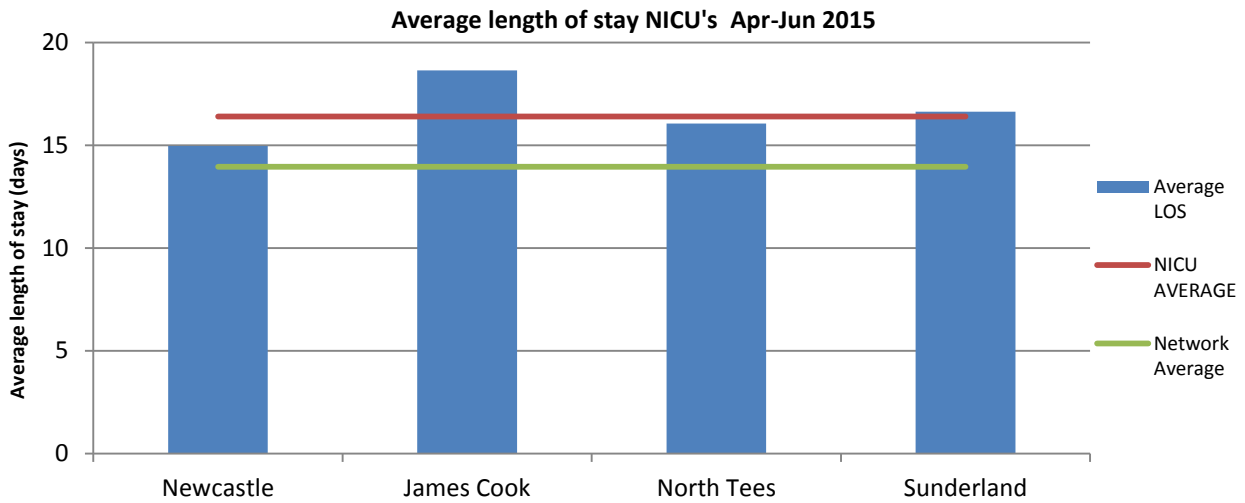
## TC Days

Unit	Apr	May	June	Total
Newcastle	423	441	278	1142
James Cook	0	0	0	0
North Tees	21	25	29	75
Sunderland	0	0	0	0
Wansbeck	14	28	21	63
Carlisle	15	17	9	41
Darlington	26	96	110	232
North Durham	87	101	160	348
Gateshead	0	1	0	1
West Cumberland	0	0	0	0
South Tyneside	0	0	0	0
Total	586	709	607	1902

- - TC recorded on BadgerNet
- - TC recorded manually on dashboard
- TC not recorded

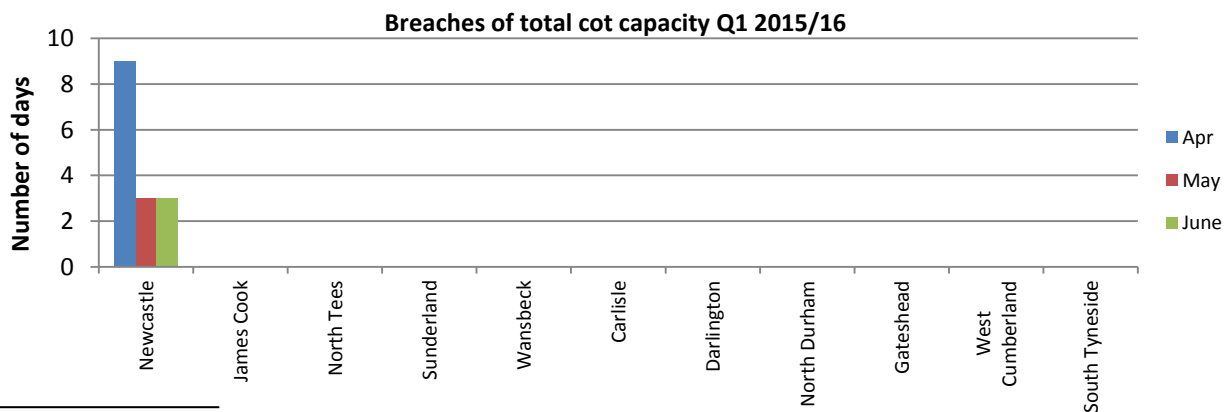
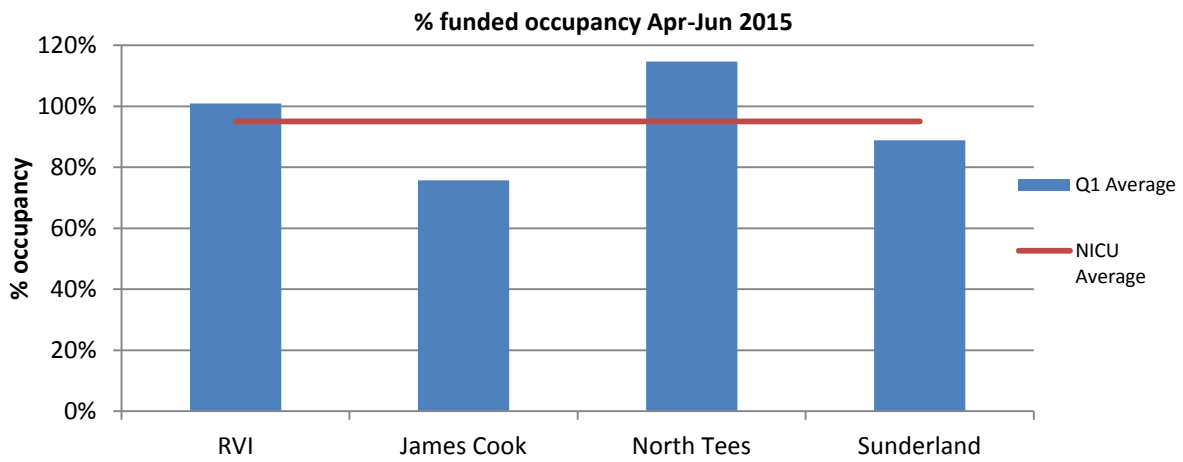
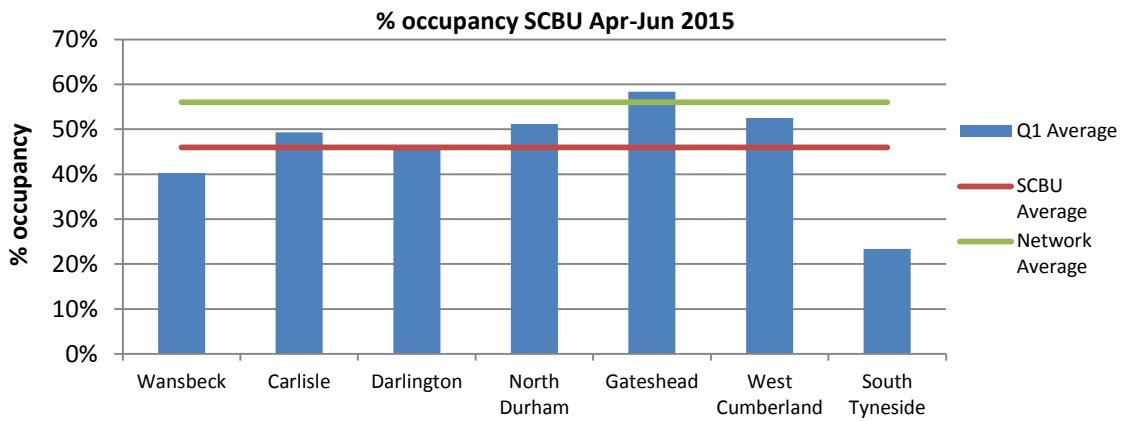
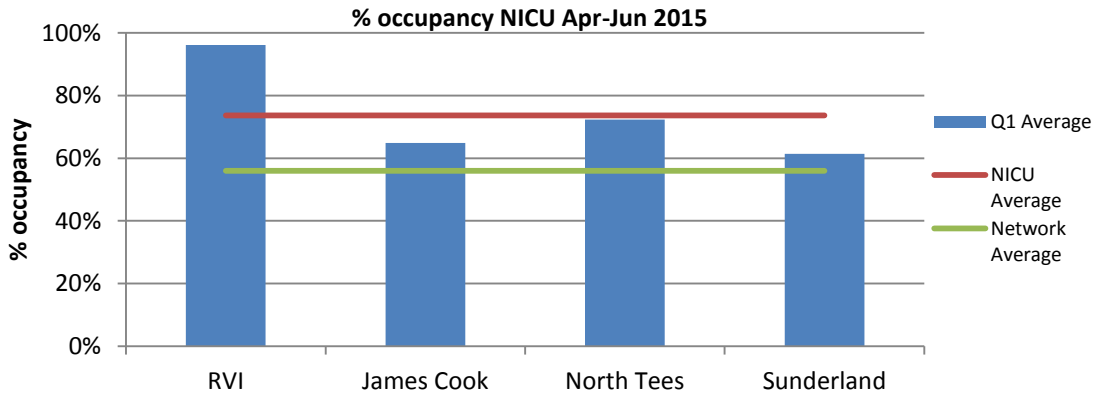


## Section 2 – Length of Stay<sup>2</sup>



<sup>2</sup> Calculated using total discharges >4hrs, not died, and total length of stay.

### Section 3 – Occupancy<sup>3</sup>



<sup>3</sup> Calculated using available total cot numbers and occupancy levels

## **Section 4a – Clinical Indicators<sup>4</sup>**

## **Section 4b – Non-clinical Indicators**

Parent App Feedback and Network Survey data may appear here in future reports

## **Section 5 – Network Audit & data/information compliance<sup>5</sup>**

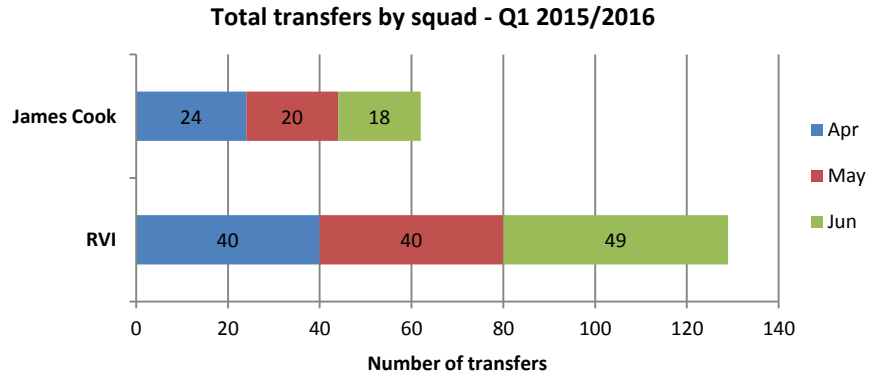
---

<sup>4</sup> These are taken from the BadgerNet Dashboard reports for national CQUINs and NNAP Metrics. The former may not be what individual Units have signed up to but are included with the NNAP figures (which will appear on their reports in due course) for benchmarking purpose only

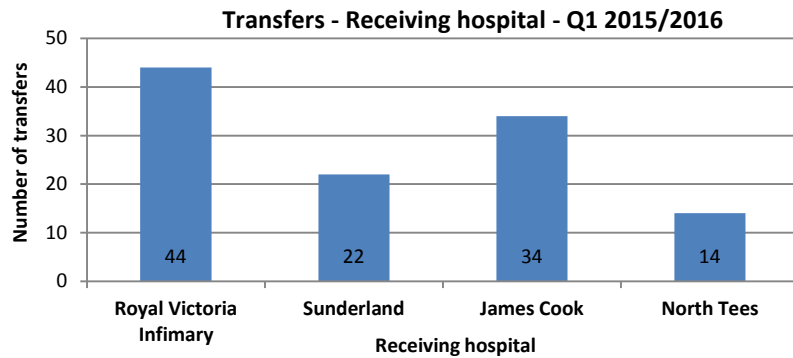
<sup>5</sup> Requested items as identified and defined by the Network as auditable will appear here in future reports, including Monthly Dashboard returns, where the deadline for submission will be 6 weeks after the end of the quarter being requested.

## Section 6 – Transport

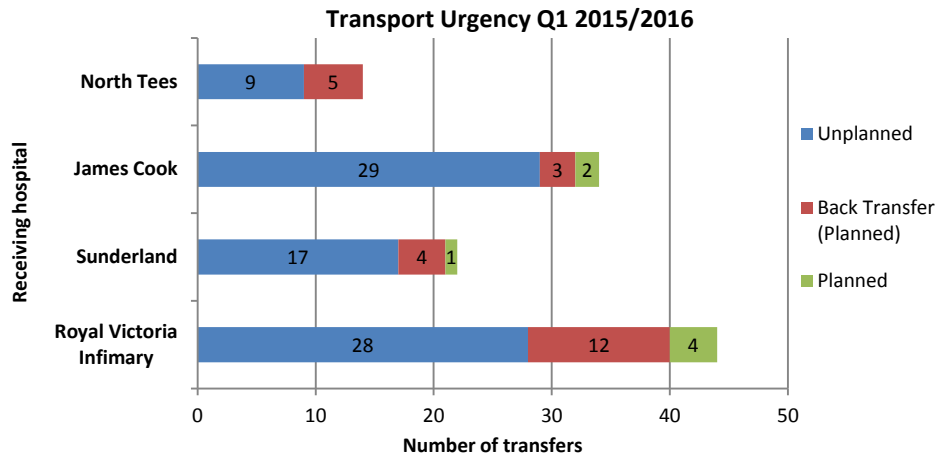
These figures represent the total number of transfers undertaken by each team per month, including back-transfers



These figures represent the total number of transfers from each of the Level 3 (NICU) Units across the quarter. These include back-transfers (see next chart below).



Definitions of urgency are subjective apart from planned back-transfers. The definition of “planned” here is where the need for transfer appears to have been known – such as for surgical cases and cardiac investigations etc. Unplanned would be defined as where transfer could not have been foreseen – such as a baby requiring ongoing care at another Unit that could not be provided at their own.



Such classifications can again also be subjective, but where there is enough clarity to suggest it, they have been coded as such in the following table. “Other” covers occasional cases such as ROP screening or laser surgery. PDA ligations usually go direct to the Freeman, but if they are referred to another NICU first, they will be coded as a PDA Ligation accordingly.

